

CMPE 150/L : Introduction to Computer Networks

Chen Qian

Computer Engineering
UCSC Baskin Engineering

Lecture 3

No Class 1/23 (next Tuesday)

- Dr. Qian absent to serve a duty for US Department of Energy in DC

Chapter 1: roadmap

1.1 what is the Internet?

1.2 network edge

- end systems, access networks, links

1.3 network core

- packet switching, circuit switching, network structure

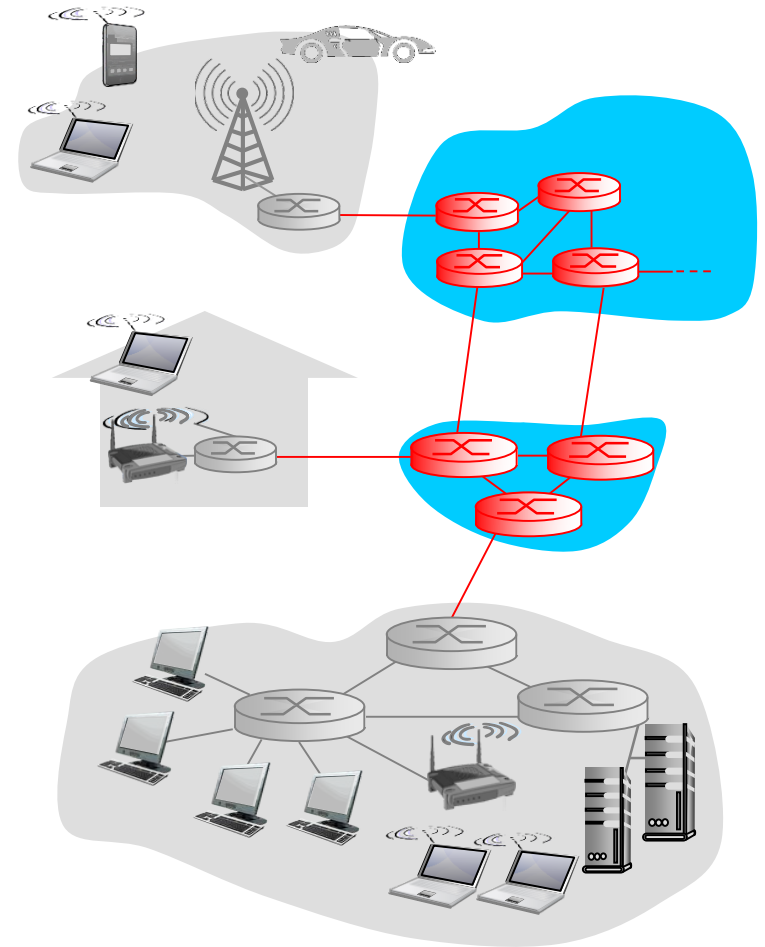
1.4 delay, loss, throughput in networks

1.5 protocol layers, service models

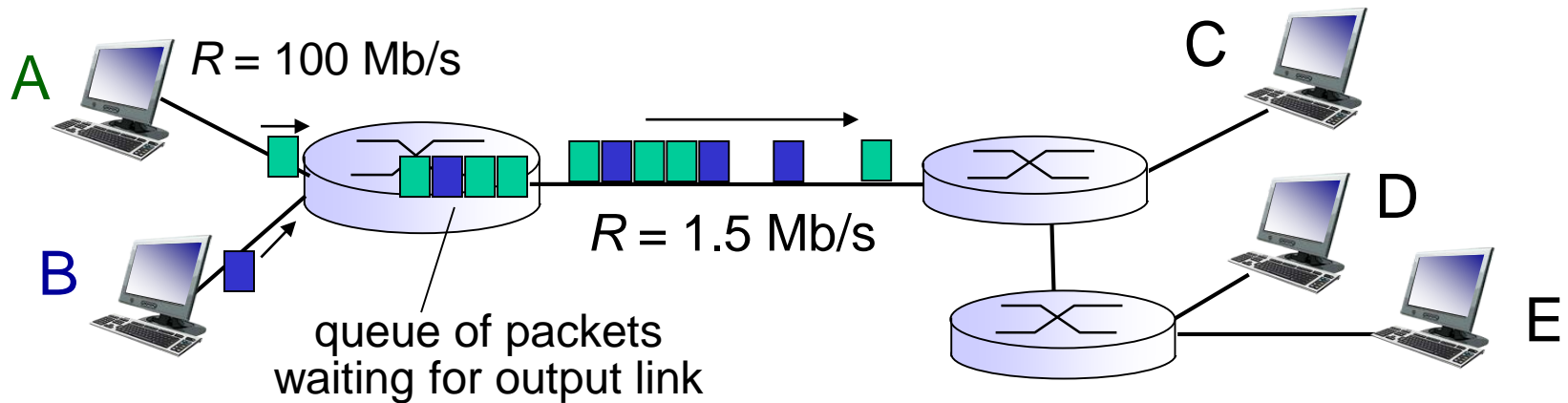
1.6 networks under attack: security

The network core

- ❖ **packet-switching: hosts break application-layer messages into *packets***
 - forward packets from one router to the next, across links on path from source to destination
 - each packet transmitted at full link capacity



Packet Switching: queueing delay, loss



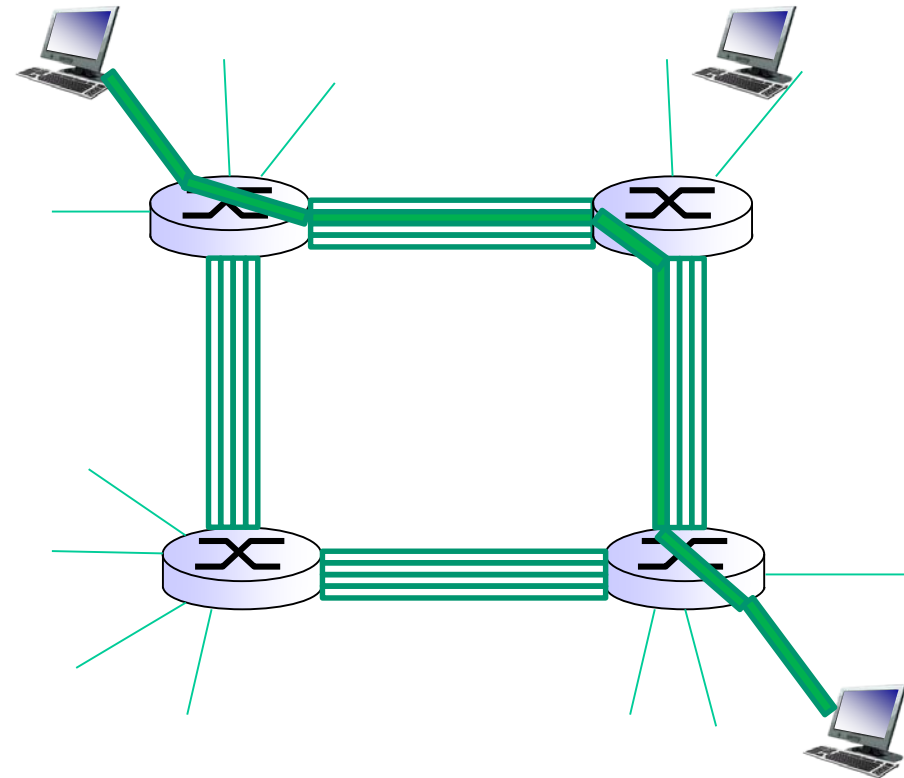
queuing and loss:

- ❖ If arrival rate (in bits) to link exceeds transmission rate of link for a period of time:
 - packets will queue, wait to be transmitted on link
 - packets can be dropped (lost) if memory (buffer) fills up

Alternative core: circuit switching

end-end resources allocated to, reserved for “call” between source & dest:

- ❖ dedicated resources: no sharing
 - circuit-like (guaranteed) performance
- ❖ circuit segment idle if not used by call (*no sharing*)
- ❖ Commonly used in traditional telephone networks



Packet switching versus circuit switching

packet switching allows more users to use network!

example:

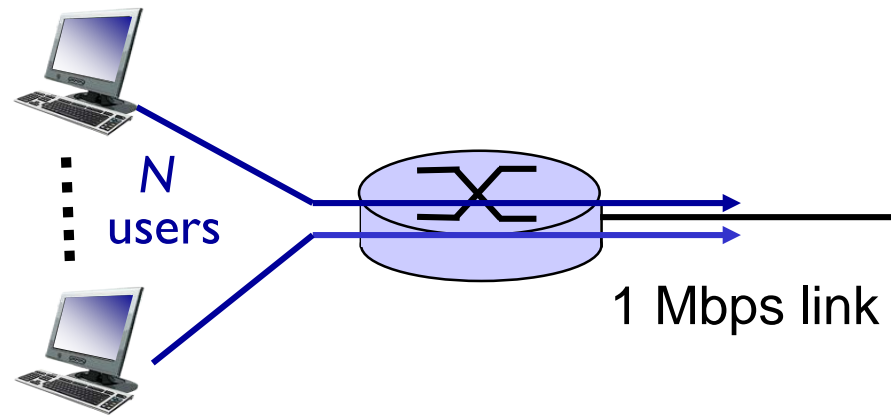
- 1 Mb/s link
- each user:
 - 100 kb/s when “active”
 - active 10% of time

❖ *circuit-switching:*

- 10 users

❖ *packet switching:*

- with 35 users, probability > 10 active at same time is less than $.0004^*$



Q: how did we get value 0.0004?

Q: what happens if > 35 users ?

Packet switching versus circuit switching

is packet switching a “slam dunk winner?”

- ❖ great for bursty data
 - resource sharing
 - simpler, no call setup
- ❖ **excessive congestion possible:** packet delay and loss
 - protocols needed for reliable data transfer, congestion control

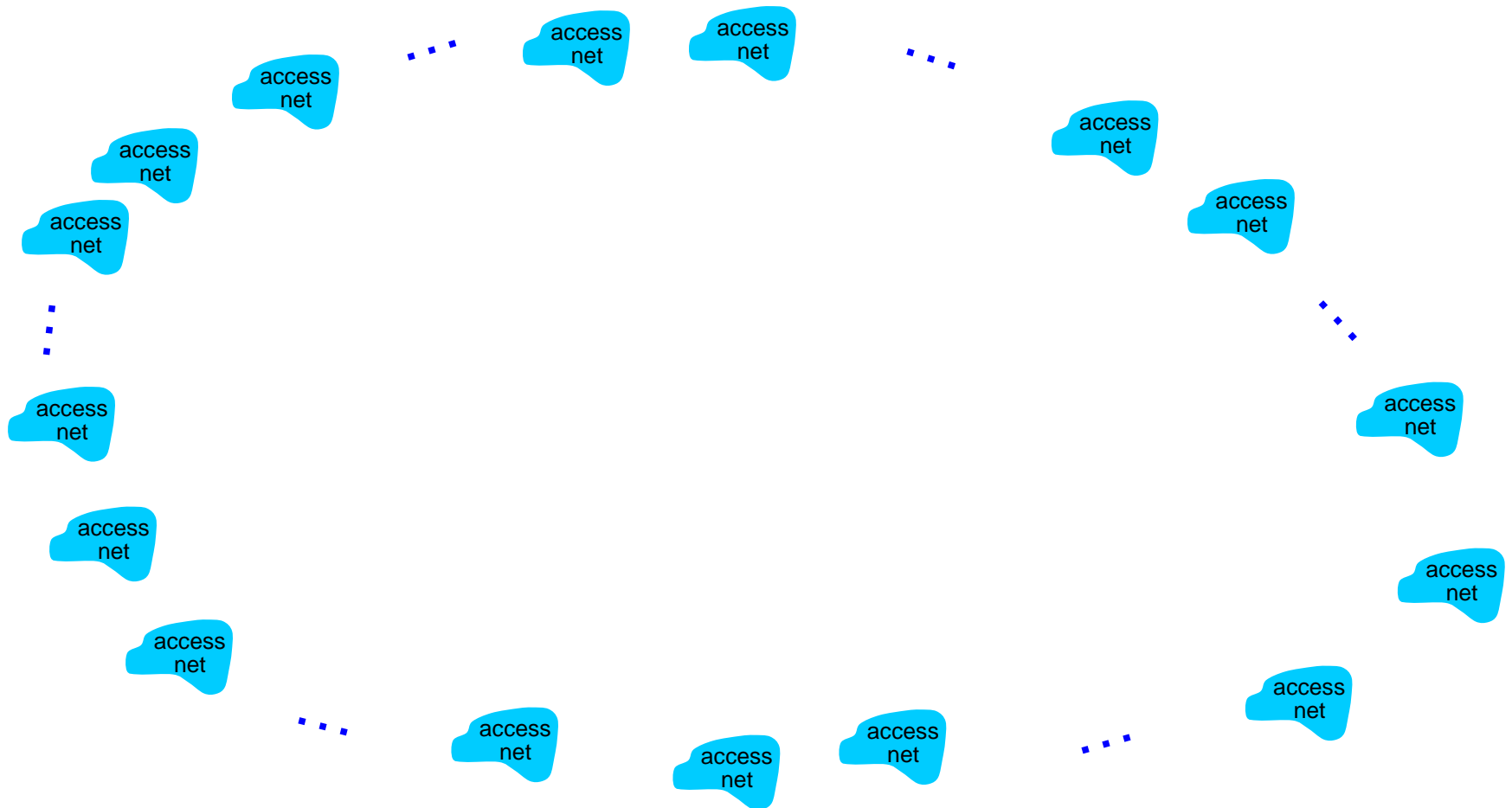
Q: human analogies of reserved resources (circuit switching) versus on-demand allocation (packet-switching)?

Internet structure: network of networks

- ❖ End systems connect to Internet via **access ISPs** (Internet Service Providers)
 - Residential, company and university ISPs
- ❖ Access ISPs in turn must be interconnected.
 - ❖ So that any two hosts can send packets to each other
- ❖ Resulting network of networks is very complex
 - ❖ Evolution was driven by **economics** and **national policies**

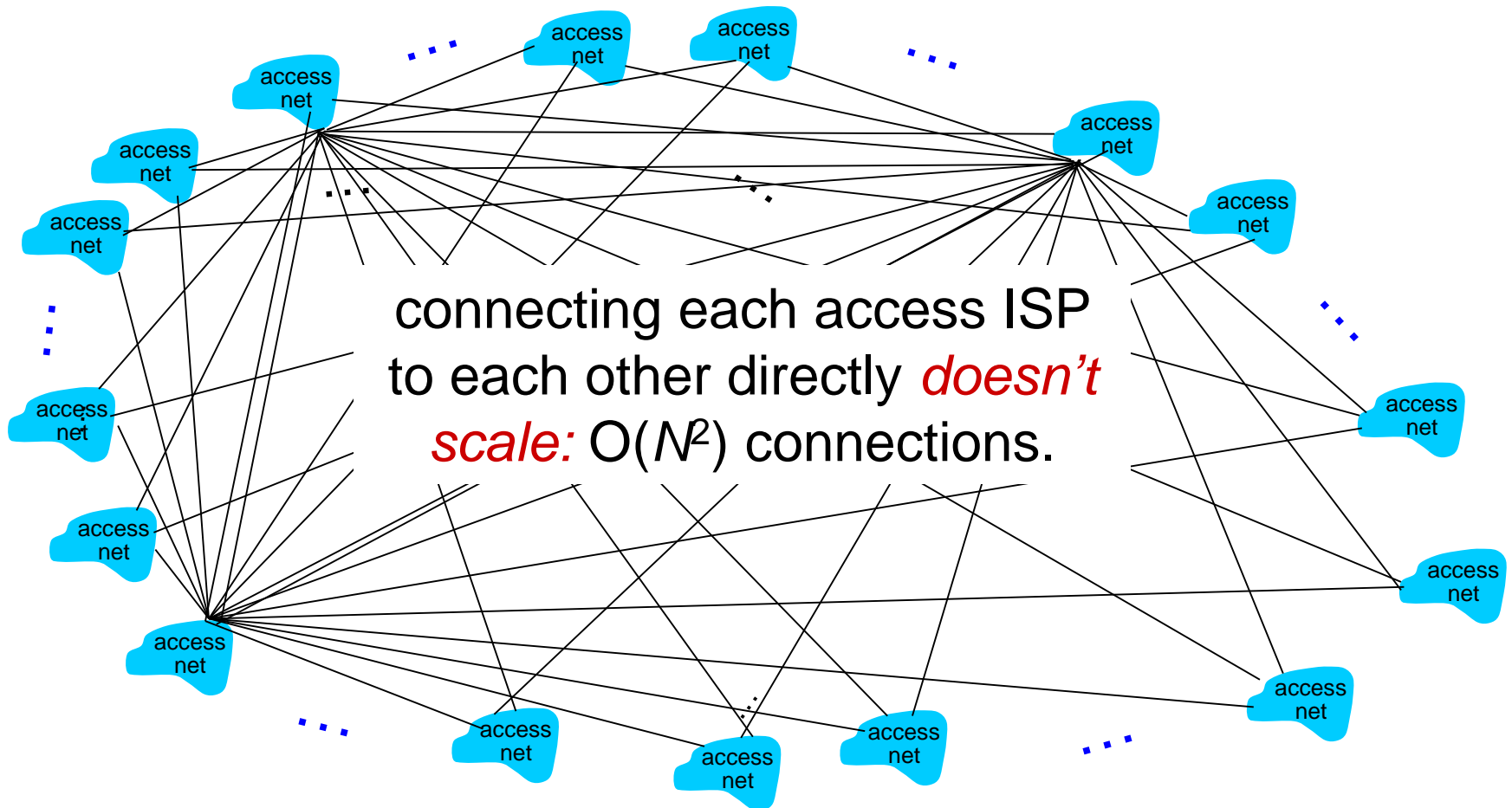
Internet structure: network of networks

Question: given *millions* of access ISPs, how to connect them together?



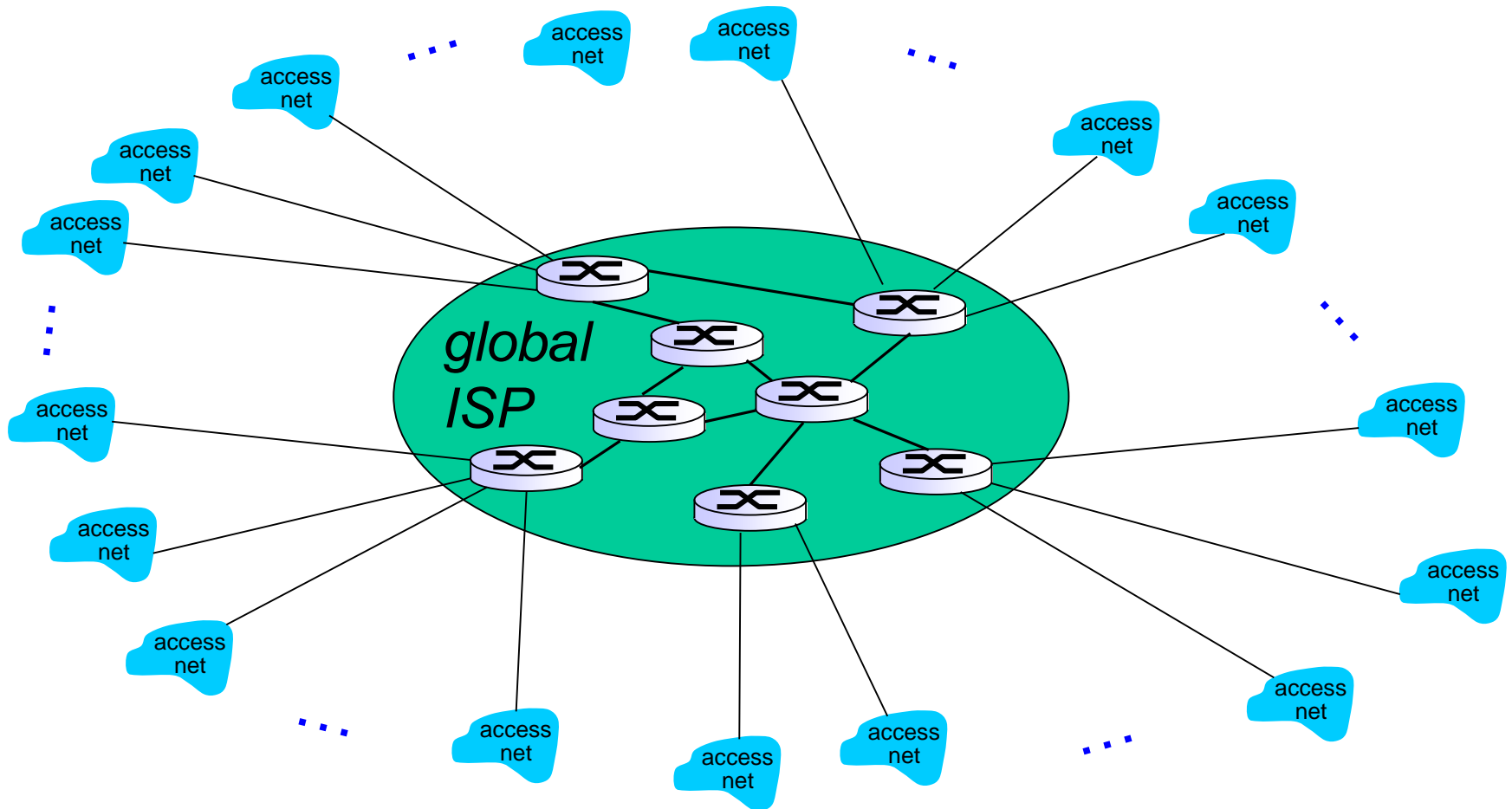
Internet structure: network of networks

Option: connect each access ISP to every other access ISP?



Internet structure: network of networks

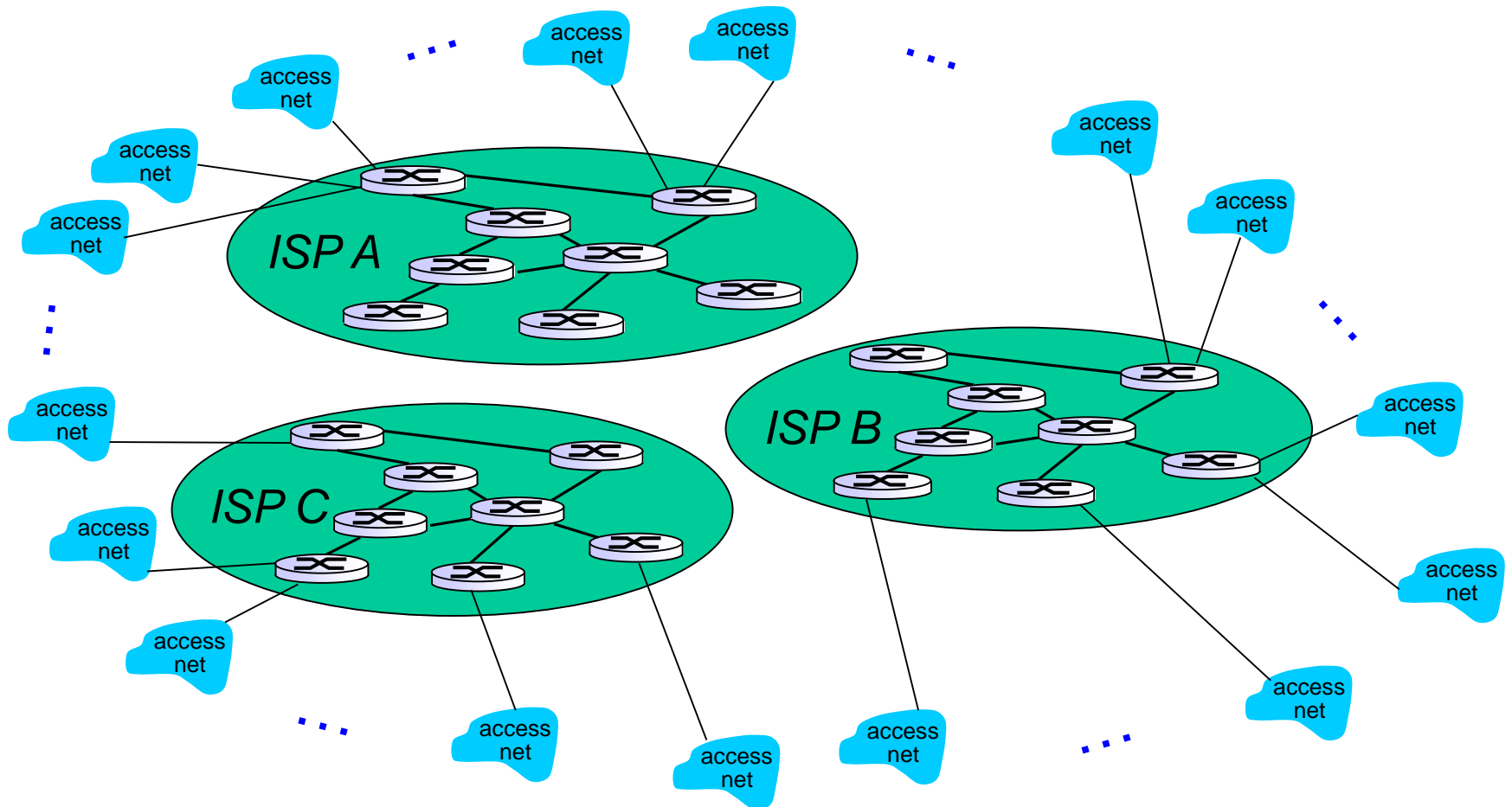
Option: connect each access ISP to a global transit ISP? Customer and provider ISPs have economic agreement.



Internet structure: network of networks

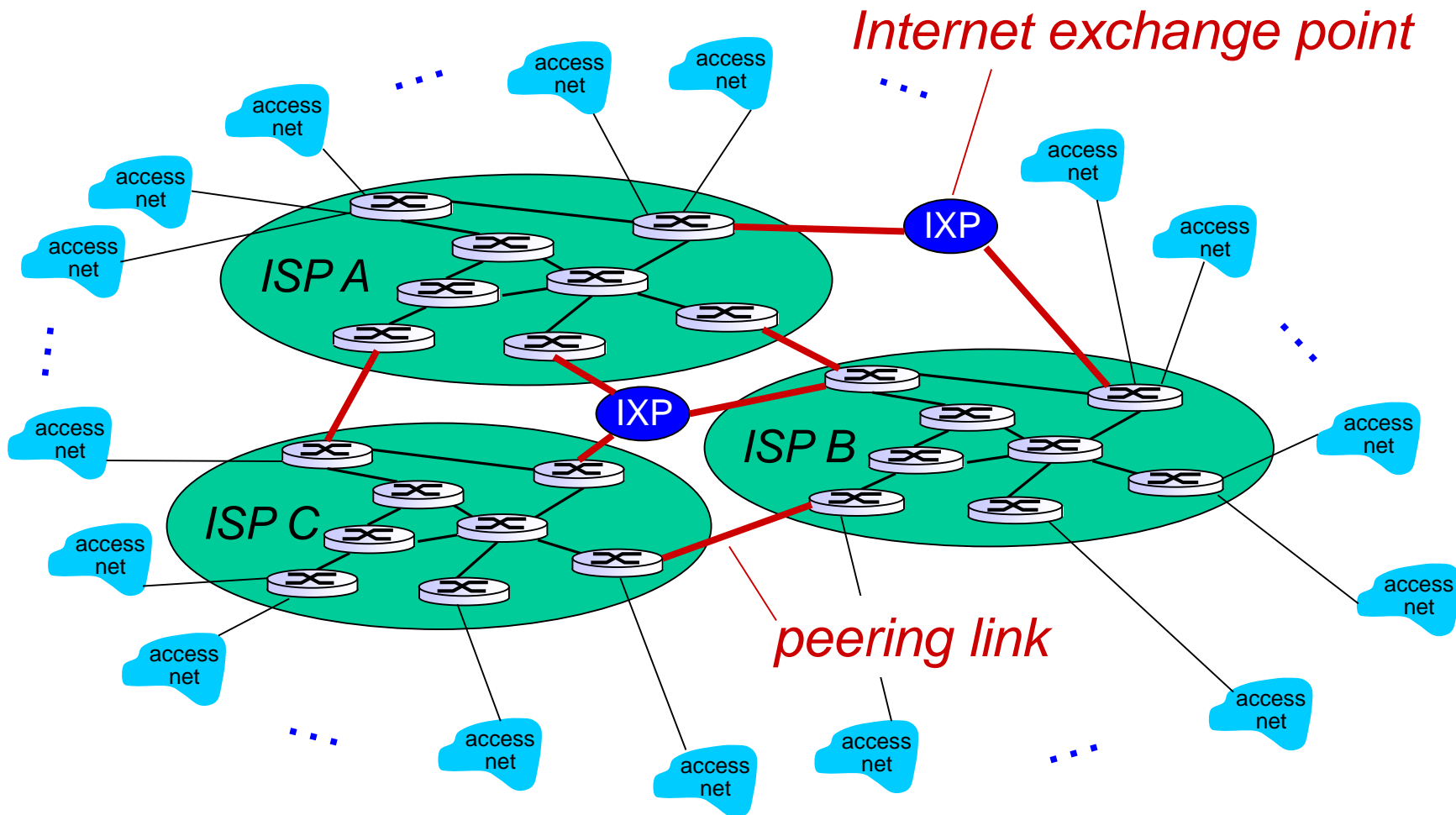
But if one global ISP is viable business, there will be competitors

....



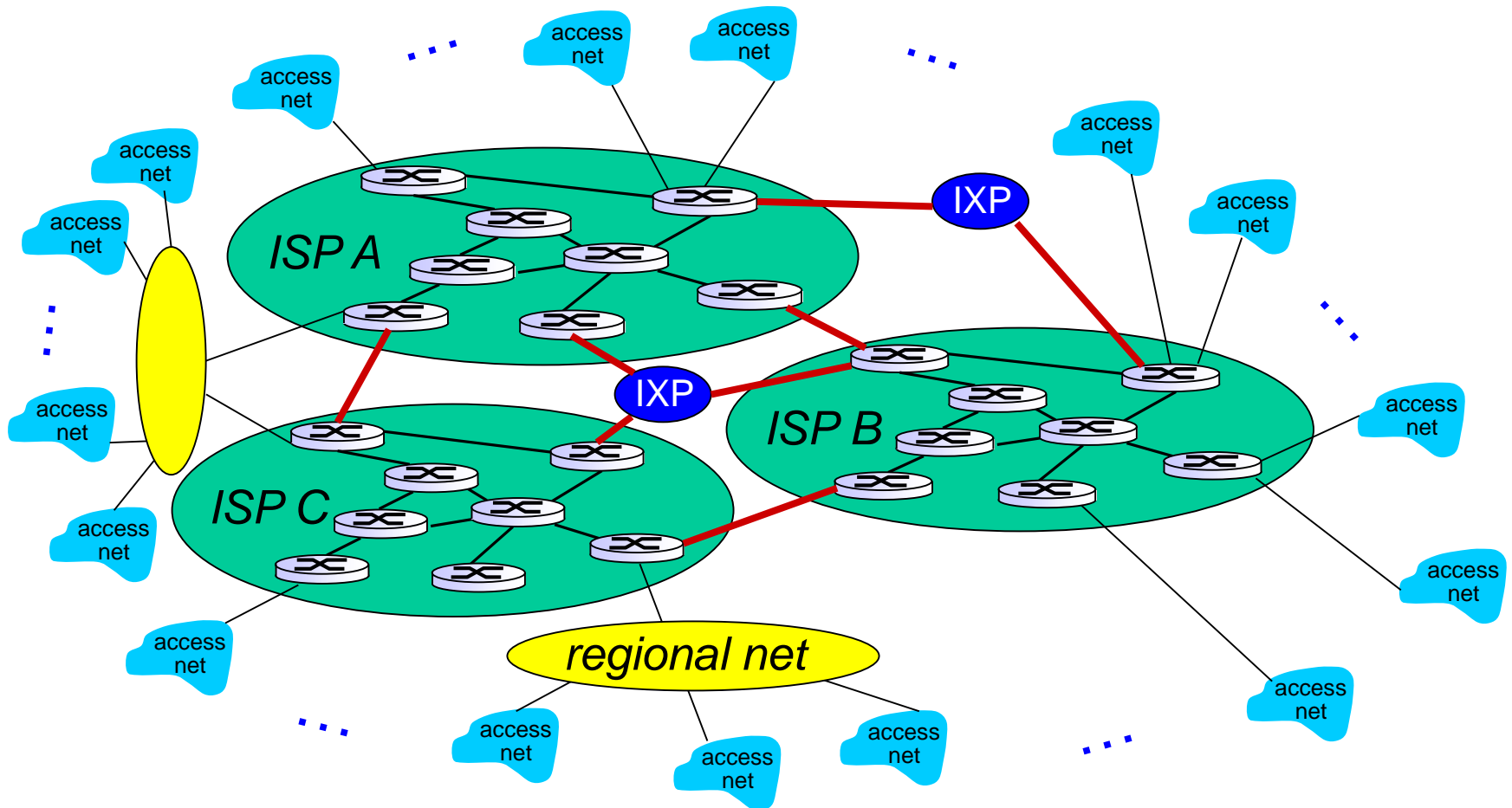
Internet structure: network of networks

But if one global ISP is viable business, there will be competitors
.... which must be interconnected



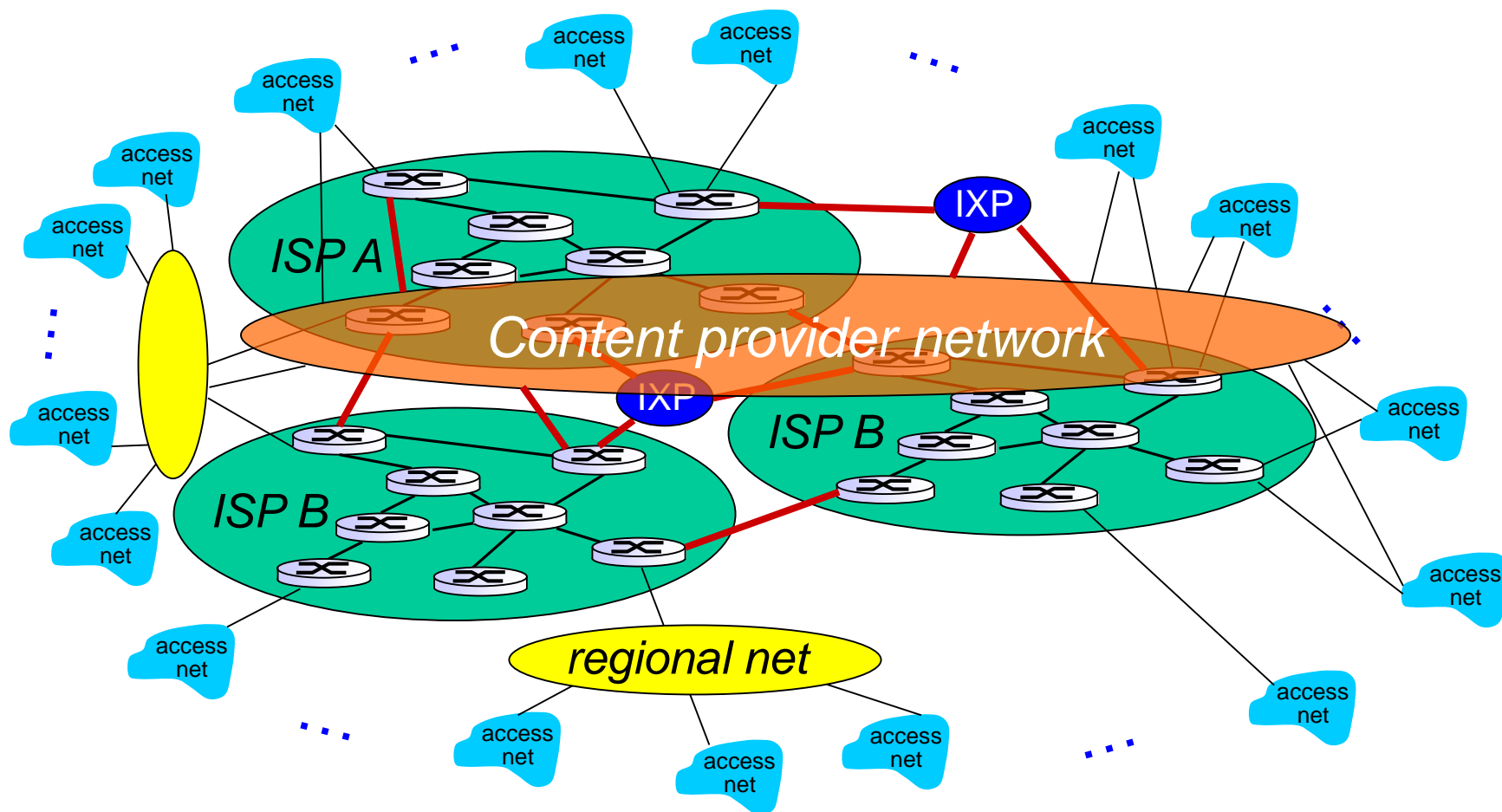
Internet structure: network of networks

... and regional networks may arise to connect access nets to ISPS

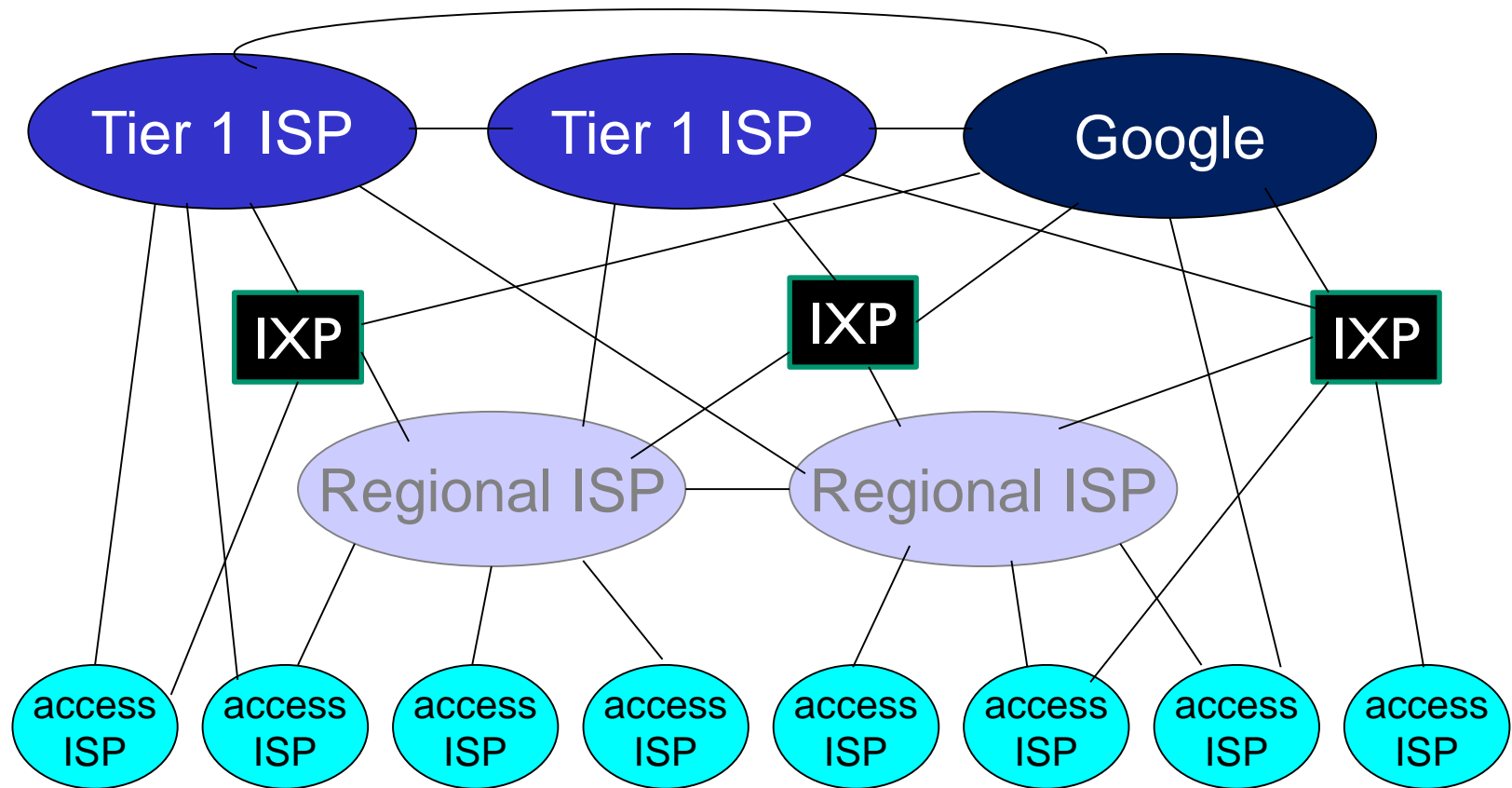


Internet structure: network of networks

... and content provider networks (e.g., Google, Microsoft, Akamai) may run their own network, to bring services, content close to end users



Internet structure: network of networks



- ❖ at center: small # of well-connected large networks
 - “**tier-1**” **commercial ISPs** (e.g., Level 3, Sprint, AT&T, NTT), national & international coverage
 - **content provider network** (e.g., Google): private network that connects its data centers to Internet, often bypassing tier-1, regional ISPs

Top Internet Service Provider State-by-State



Source: 50 million web visits

WebnagerFX
Webpage FX

Leonard Kleinrock talks about packet switch vs. circuit switching.

<https://www.youtube.com/watch?v=rHHpwcZiEW4>

Time: 2:55 – 7:00

Chapter 1: roadmap

1.1 what *is* the Internet?

1.2 network edge

- end systems, access networks, links

1.3 network core

- packet switching, circuit switching, network structure

1.4 delay, loss, throughput in networks

1.5 protocol layers, service models

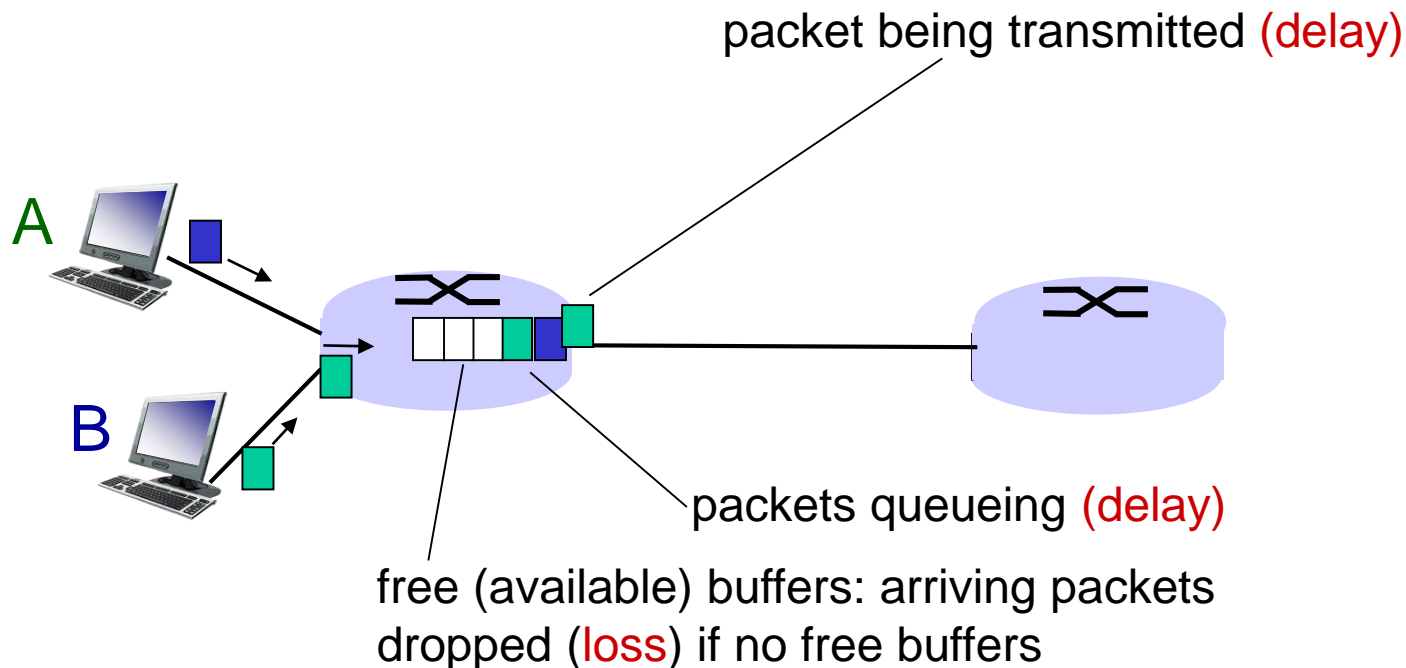
1.6 networks under attack: security

1.7 history

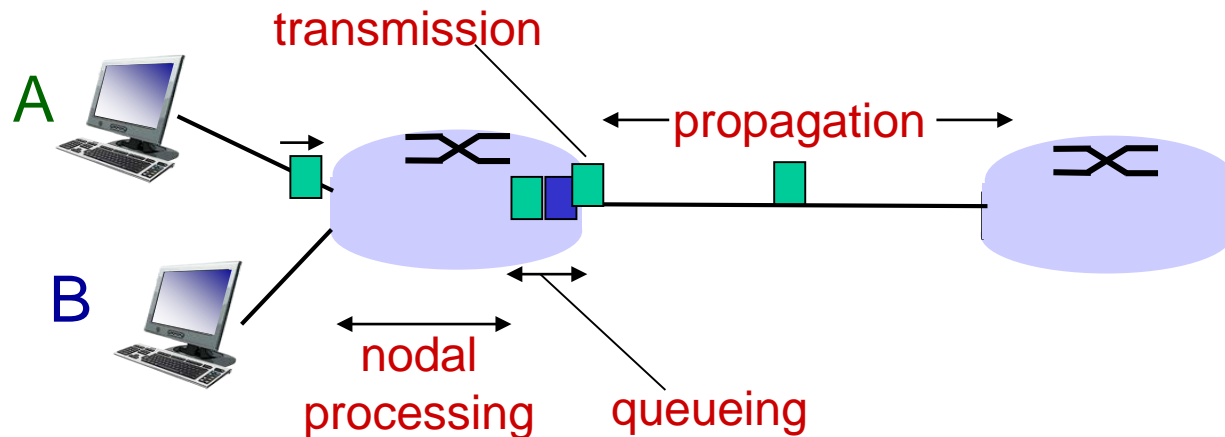
How do loss and delay occur?

packets *queue* in router buffers

- ❖ packet arrival rate to link (temporarily) exceeds output link capacity
- ❖ packets queue, wait for turn



Four sources of packet delay



$$d_{\text{nodal}} = d_{\text{proc}} + d_{\text{queue}} + d_{\text{trans}} + d_{\text{prop}}$$

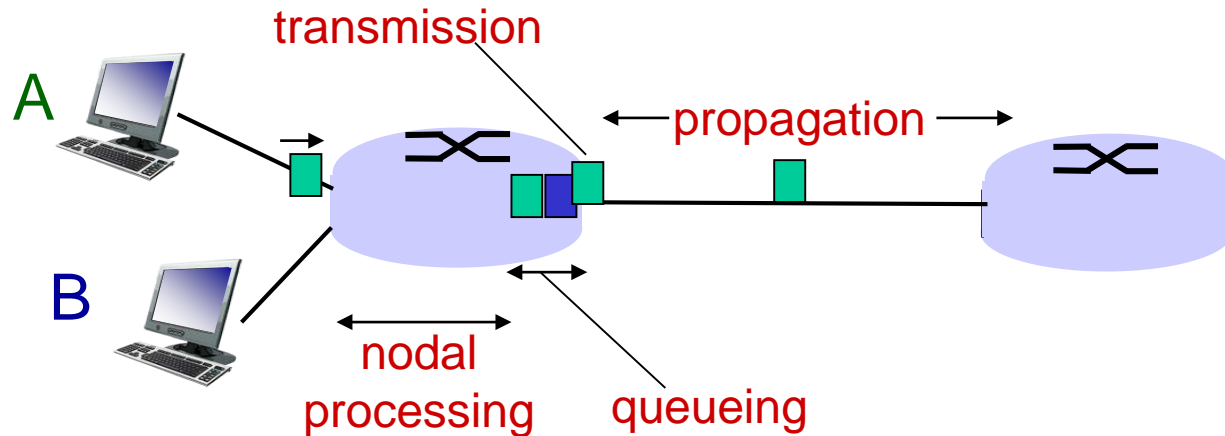
d_{proc} : nodal processing

- check bit errors
- determine output link
- typically < msec

d_{queue} : queueing delay

- time waiting at output link for transmission
- depends on congestion level of router

Four sources of packet delay



$$d_{\text{nodal}} = d_{\text{proc}} + d_{\text{queue}} + d_{\text{trans}} + d_{\text{prop}}$$

d_{trans} : transmission delay:

- L : packet length (bits)
- R : link bandwidth (bps)
- $d_{\text{trans}} = L/R$

d_{prop} : propagation delay:

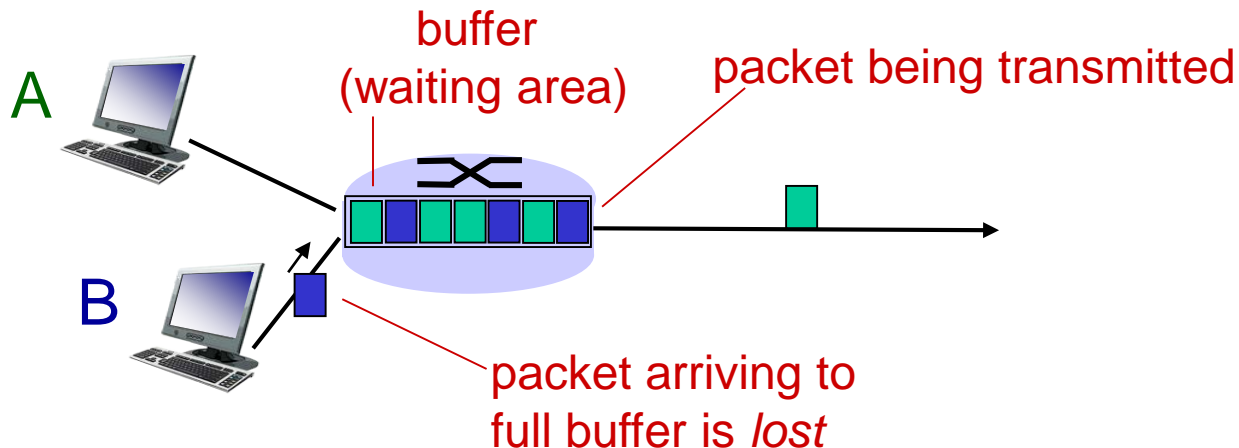
- d : length of physical link
- s : propagation speed in medium ($\sim 2 \times 10^8$ m/sec)
- $d_{\text{prop}} = d/s$

Analogy using Mailing network

- ❖ Transmission delay:
 - Time to write a mail
- ❖ Propagation delay
 - Post truck carrying the mail moves to the next post office
- ❖ Processing delay
 - Post officers distribute the mail to the right box for next station
- ❖ Queuing delay
 - Mails waiting in the post office for processing

Packet loss

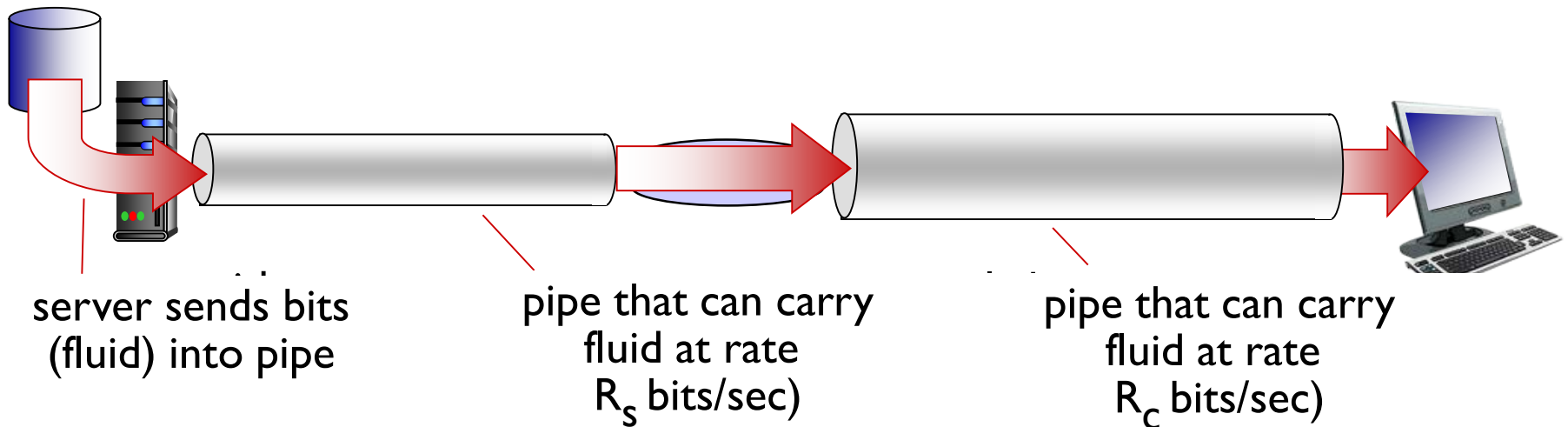
- ❖ queue (aka buffer) has finite capacity
- ❖ packet arriving to full queue dropped (aka lost)
- ❖ lost packet may be retransmitted by previous node, by source end system, or not at all



Animation of queuing

Throughput

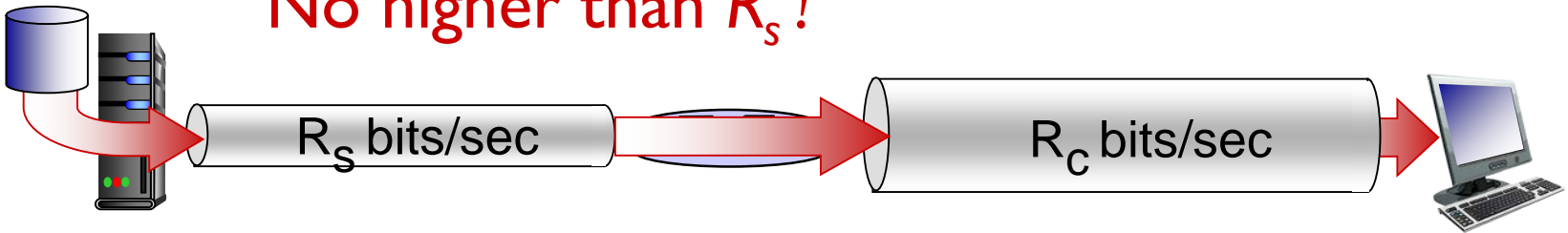
- ❖ *throughput*: rate (bits/time unit) at which bits transferred between sender/receiver
 - *instantaneous*: rate at given point in time
 - *average*: rate over longer period of time



Throughput (more)

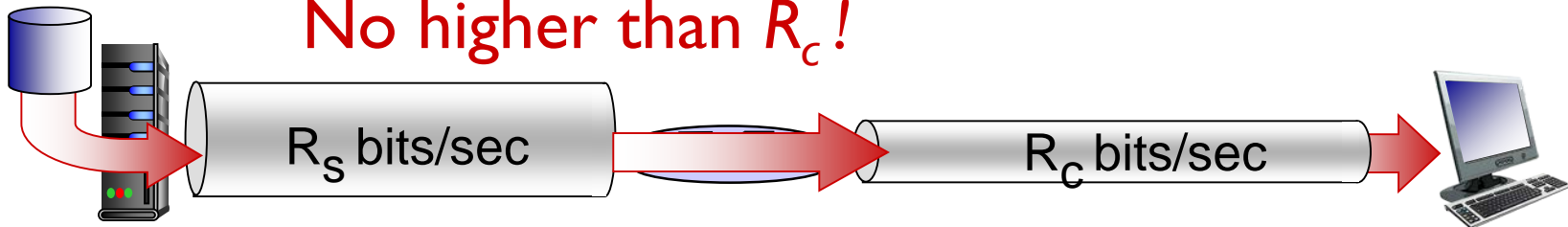
- ❖ $R_s < R_c$ What is average end-end throughput?

No higher than R_s !



- ❖ $R_s > R_c$ What is average end-end throughput?

No higher than R_c !

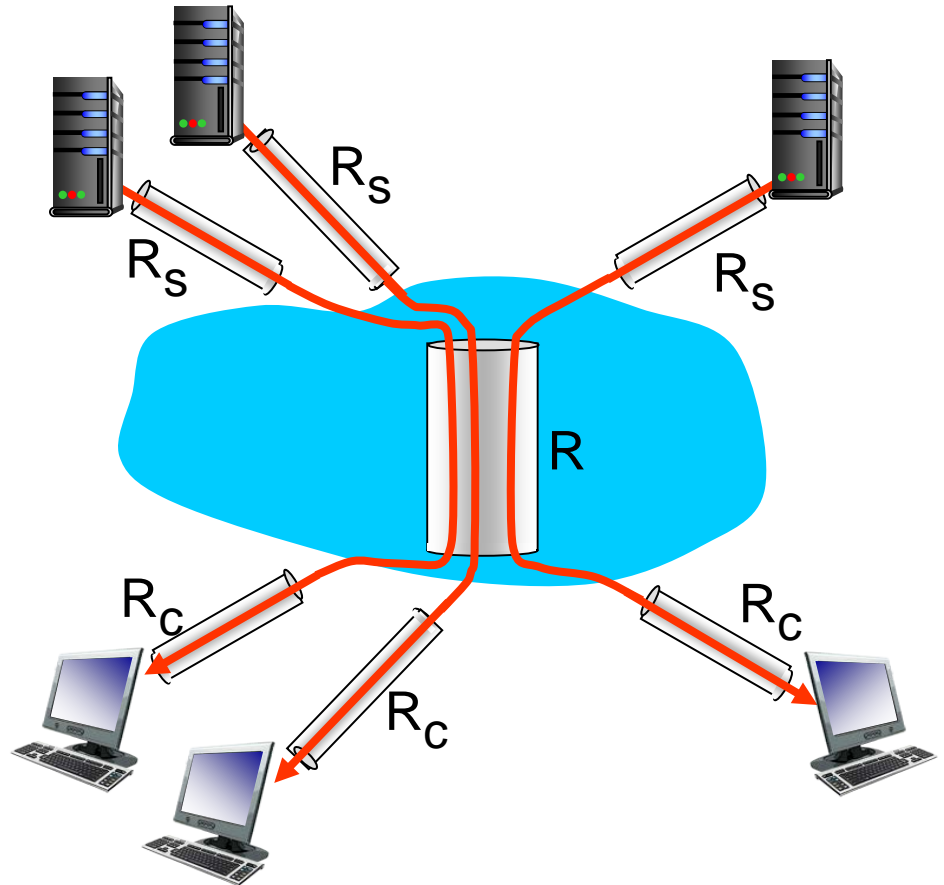


bottleneck link

link on end-end path that constrains end-end throughput

Throughput: Internet scenario

- ❖ per-connection end-end throughput:
 $\min(R_c, R_s, R/10)$
- ❖ in practice: R_c or R_s is often bottleneck



10 connections (fairly) share
backbone bottleneck link R bits/sec

Chapter 1: roadmap

1.1 what *is* the Internet?

1.2 network edge

- end systems, access networks, links

1.3 network core

- packet switching, circuit switching, network structure

1.4 delay, loss, throughput in networks

1.5 protocol layers, service models

1.6 networks under attack: security

1.7 history

Protocol “layers”

*Networks are complex,
with many “pieces”:*

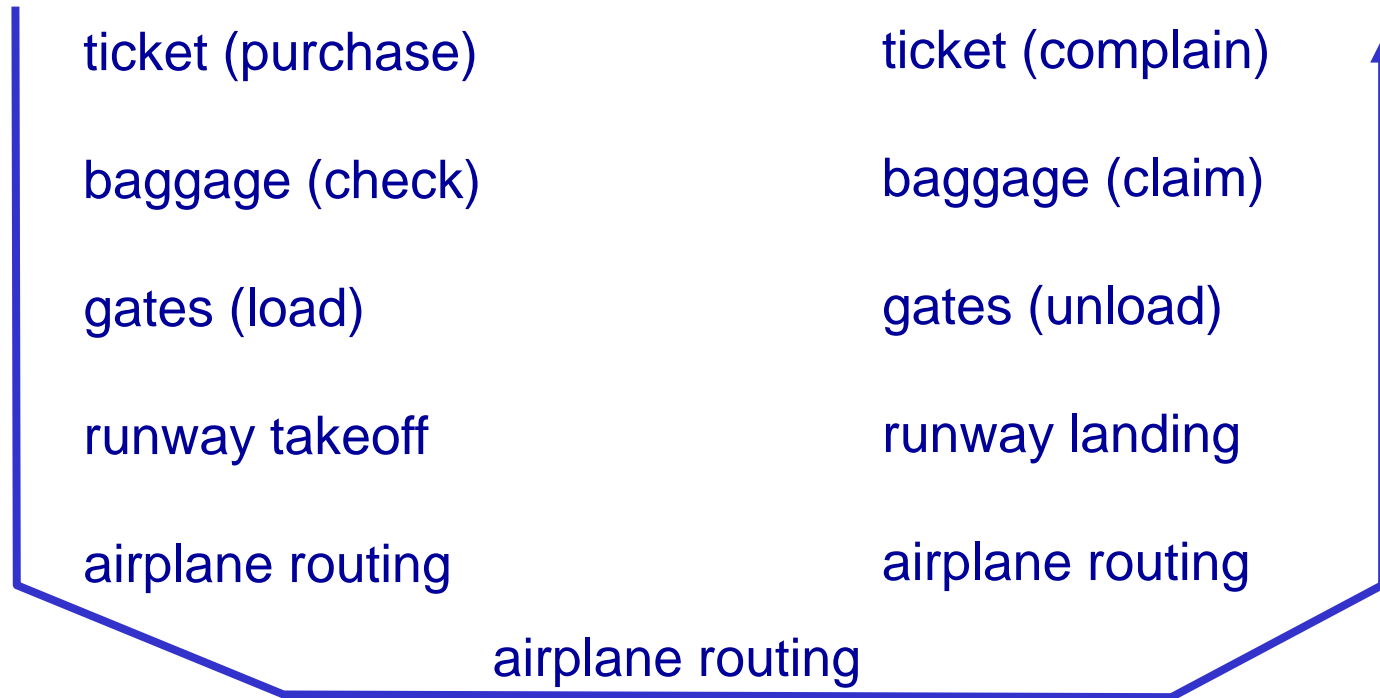
- hosts
- routers
- links of various media
- applications
- protocols
- hardware, software

Question:

is there any hope of
organizing structure of
network?

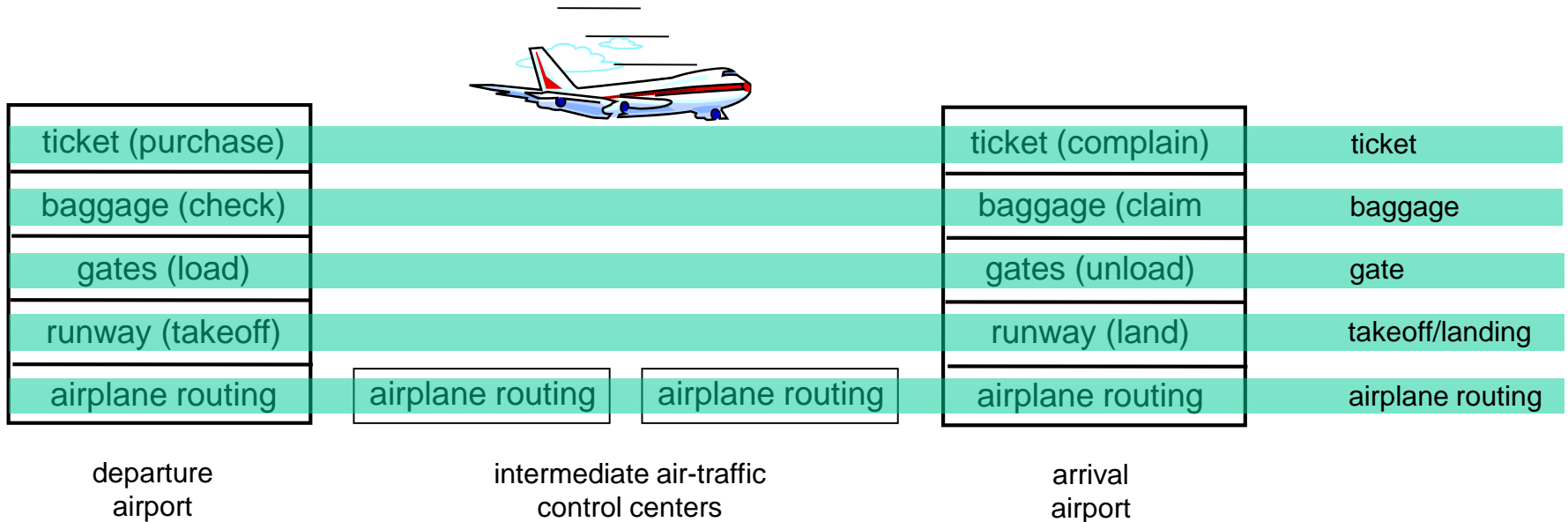
.... or at least our
discussion of networks?

Organization of air travel



❖ a series of steps

Layering of airline functionality



layers: each layer implements a service

- via its own internal-layer actions
- relying on services provided by layer below

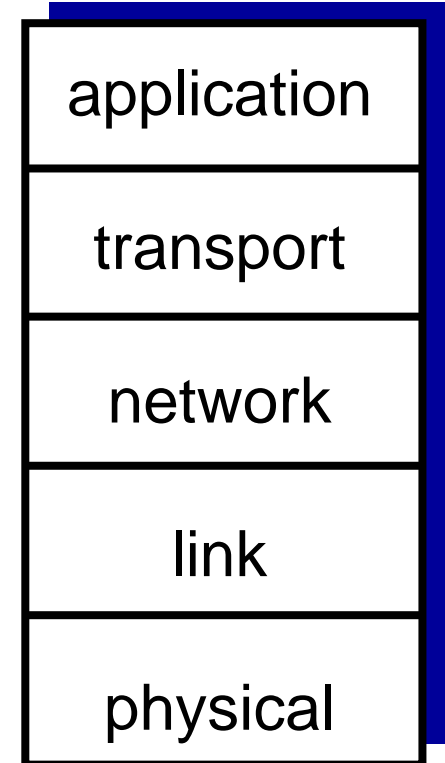
Why layering?

dealing with complex systems:

- ❖ explicit structure allows identification, relationship of complex system's pieces
 - layered *reference model* for discussion
- ❖ modularization eases maintenance, updating of system
 - change of implementation of layer's service transparent to rest of system
 - e.g., change in gate procedure doesn't affect rest of system
- ❖ layering considered harmful?

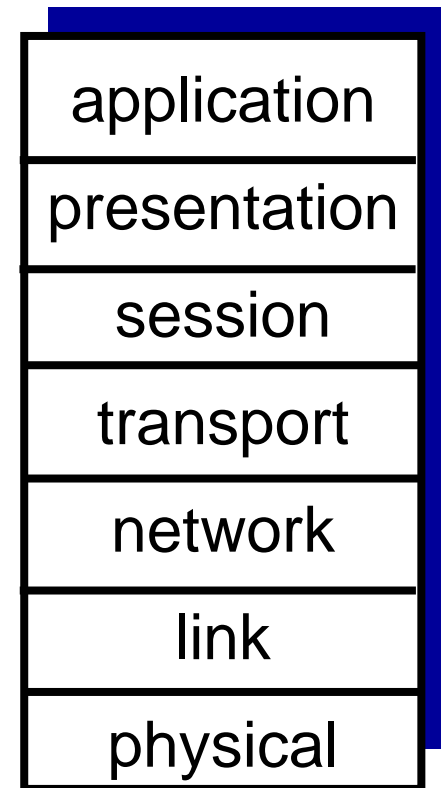
Internet protocol stack

- ❖ *application*: supporting network applications
 - FTP, SMTP, HTTP
- ❖ *transport*: process-process data transfer
 - TCP, UDP
- ❖ *network*: routing of datagrams from source to destination
 - IP, routing protocols
- ❖ *link*: data transfer between neighboring network elements
 - Ethernet, 802.111 (WiFi), PPP
- ❖ *physical*: bits “on the wire”

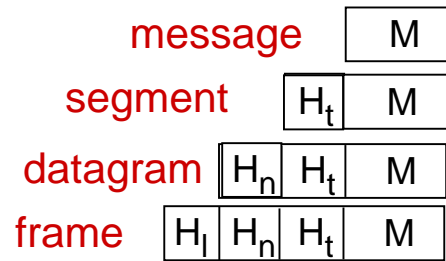


ISO/OSI reference model

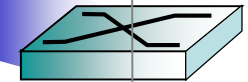
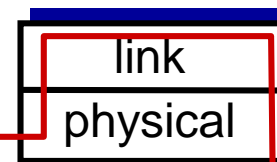
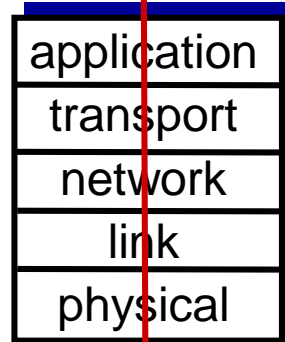
- ❖ **presentation**: allow applications to interpret meaning of data, e.g., encryption, compression, machine-specific conventions
- ❖ **session**: synchronization, checkpointing, recovery of data exchange
- ❖ Internet stack “missing” these layers!
 - these services, *if needed*, must be implemented in application
 - needed?



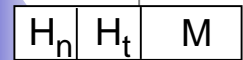
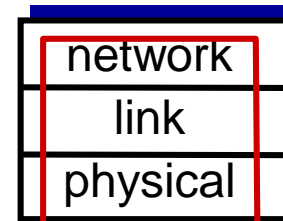
Encapsulation



source

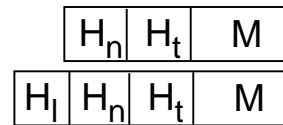
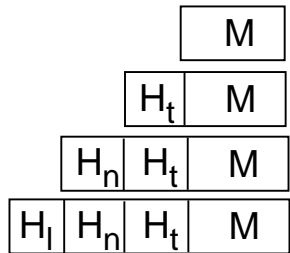
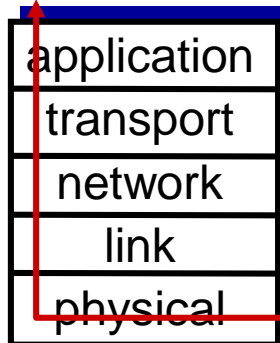


switch



router

destination



Chapter 1: roadmap

1.1 what *is* the Internet?

1.2 network edge

- end systems, access networks, links

1.3 network core

- packet switching, circuit switching, network structure

1.4 delay, loss, throughput in networks

1.5 protocol layers, service models

1.6 networks under attack: security

Network security

- ❖ **field of network security:**
 - how bad guys can attack computer networks
 - how we can defend networks against attacks
 - how to design architectures that are immune to attacks
- ❖ **Internet not originally designed with (much) security in mind**
 - *original vision:* “a group of mutually trusting users attached to a transparent network” 😊
 - Internet protocol designers playing “catch-up”
 - security considerations in all layers!

Bad guys: put malware into hosts via Internet

- ❖ malware can get in host from:
 - *virus*: self-replicating infection by receiving/executing object (e.g., e-mail attachment)
 - *worm*: self-replicating infection by passively receiving object that gets itself executed
- ❖ **spyware malware** can record keystrokes, web sites visited, upload info to collection site
- ❖ infected host can be enrolled in **botnet**, used for spam. DDoS attacks

Robert Tappan Morris



- ❖ Son of Robert Morris Sr., chief scientist at National Security Agency (NSA)

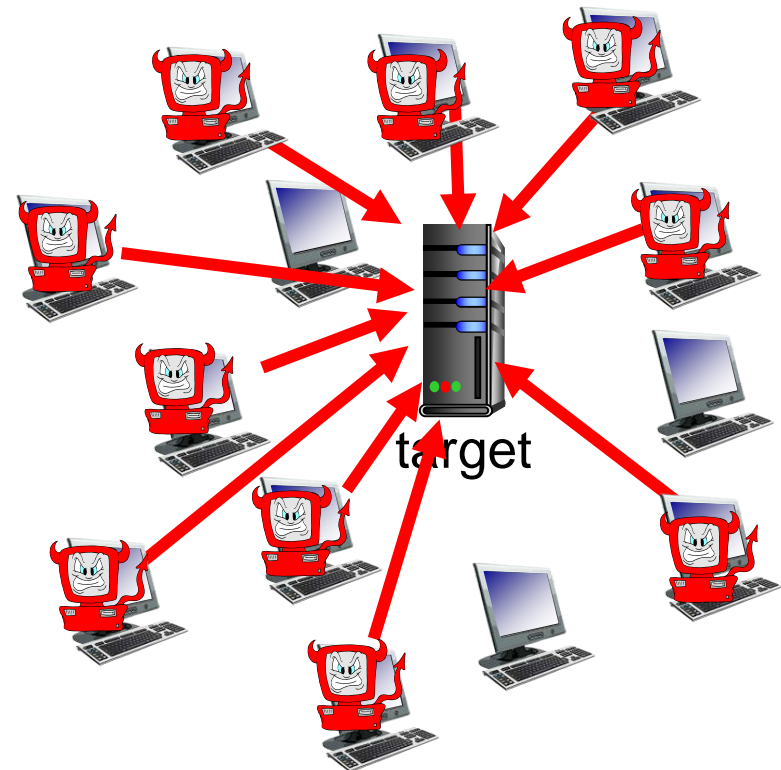
Robert Tappan Morris

- ❖ Developed **the first worm on the Internet** in 1988, while he was a graduate student at Cornell University.
 - He said it was designed to gauge the size of the Internet.
 - released the worm from MIT, rather than Cornell.
 - Caused \$10M - \$100M loss
 - Sentenced to three years of probation, 400 hours of community service
- ❖ A Computer Science professor at MIT since 1999.
 - Not because of his worm!!

Bad guys: attack server, network infrastructure

Denial of Service (DoS): attackers make resources (server, bandwidth) unavailable to legitimate traffic by overwhelming resource with bogus traffic

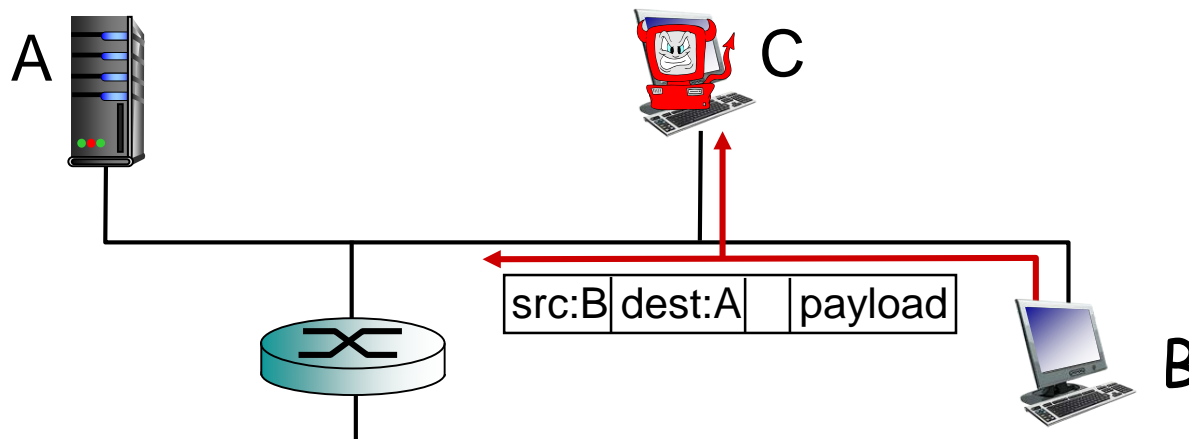
1. select target
2. break into hosts around the network (see botnet)
3. send packets to target from compromised hosts



Bad guys can sniff packets

packet “sniffing”:

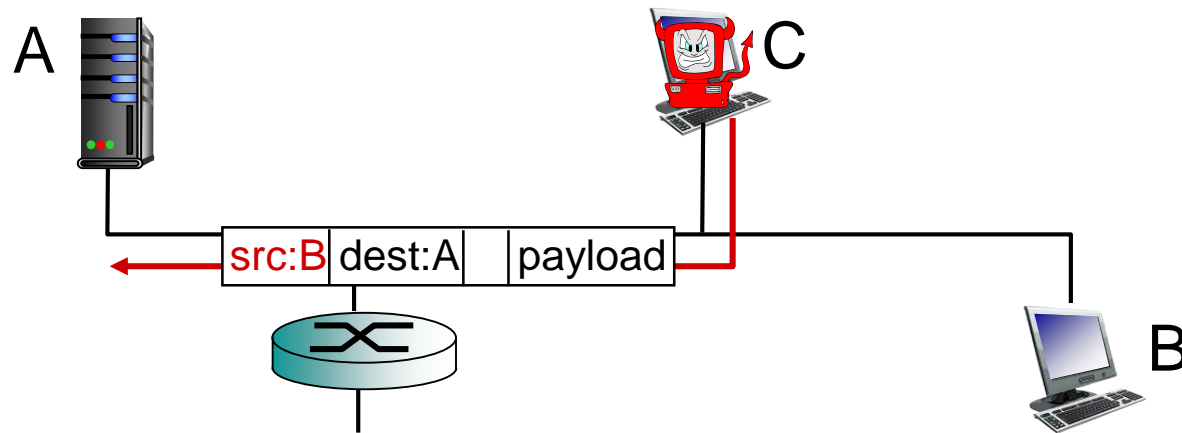
- broadcast media (shared ethernet, wireless)
- promiscuous network interface reads/records all packets (e.g., including passwords!) passing by



- ❖ wireshark software used for labs is a (free) packet-sniffer

Bad guys can use fake addresses

IP spoofing: send packet with false source address



... lots more on security (throughout, Chapter 8)

Next class

- ❖ Please read Chapter 2.1-2.2 of your textbook
BEFORE Class